

**CARATTERISTICHE GENERALI • MAIN FEATURES**

Alesaggi: 32 - 40 - 50 - 63 - 80 - 100 mm  
 Bores: 32 - 40 - 50 - 63 - 80 - 100 mm

**COSTRUZIONE • CONSTRUCTION**

Camicia <i>Liner</i>	AISI 304
Stelo <i>Piston rod</i>	AISI 316
Testate <i>Heads</i>	AISI 304
Guarnizioni <i>Seals</i>	Poliuretano + NBR* <i>Polyurethane + NBR*</i>
Boccola di amm. <i>Cushion. bush</i>	Tecnopolim. autolubrif. <i>Self-lubrif. technopolymer</i>
Boccola guida <i>Bush</i>	Bronzo sint. <i>Sintered bronze</i>
Valvola reg. frenata <i>Cushion</i>	AISI 304
Tiranti <i>Tie rods</i>	AISI 304
Pistone monoblocco con magnete <i>Magnetic piston</i>	
Pistone monoblocco senza magnete <i>Not-magnetic piston</i>	
Viti di assemblaggio <i>Assembling screws</i>	AISI 304

\* a richiesta in Viton / *Viton on request*

**CARATTERISTICHE TECNICHE • TECHNICAL FEATURES**

Pressione d'esercizio <i>Working pressure</i>	Max. 10 bar
Temperatura d'esercizio <i>Operation temperature range</i>	-20/+80°C con aria secca ( <i>in dry air</i> )*
Fluido <i>Fluid</i>	Aria lubrificata e non lubrificata <i>Air filtered and lubricated or not lubricated</i>

\* con guarnizioni in Viton -20/+230°C / *with Viton seals -20/+230°C*

**FORZA DI SPINTA E DI TIRO (6 bar) • THRUST AND TRACTION FORCES (6 bar)**

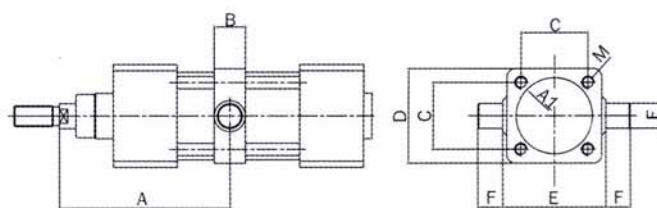
Alesaggio <i>Bore (mm.)</i>	Spinta <i>Thrust (N)</i>	Trazione <i>Traction (N)</i>
32	458	394
40	716	601
50	1180	939
63	1775	1600
80	2863	2583
100	4474	4200

## COMPONENTI DI FISSAGGIO • FIXING PARTS

### OSCILLANTE INTERMEDIO - OII SWINGING MIDDLE HINGE

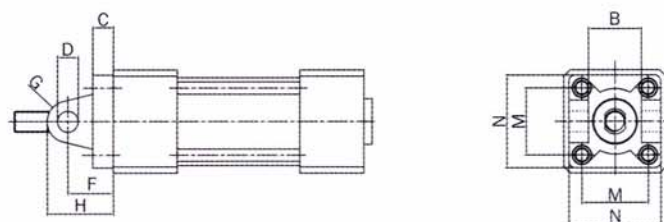
Ø	A		B	C	D	E	F	A1	M
	min.	max							
32	69,3	76,8*	15	32,5	46	50	12	37	M6
40	75,5	89,5*	20	38	59	63	16	46	M6
50	85,7	94,3*	20	46,5	69	73	16	56	M8
63	90	105*	25	56,5	84	90	20	69	M8
80	101	119*	25	72	102	110	20	87	M10
100	114,5	125,5*	30	89	125	132	25	107	M10

\* aggiungere la corsa / add the stroke



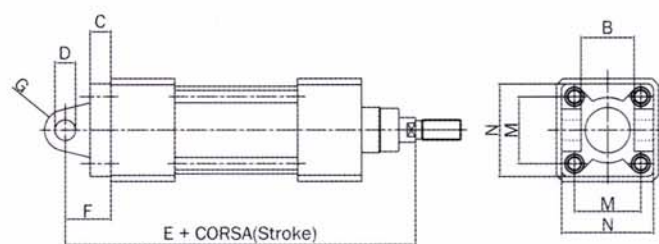
### CERNIERA FEMMINA ANTERIORE - CAI FRONT FEMALE HINGE

Ø	B	C	D	E	F	G	H	M	N
32	26	10	10	142	22	10	32	32,5	45
40	28	10	12	160	25	12	37	38	55
50	32	10	12	170	27	12	39	46,5	65
63	40	12	16	190	32	16	48	56,5	75
80	50	14	16	210	36	16	52	72	95
100	60	16	20	230	41	20	61	89	115



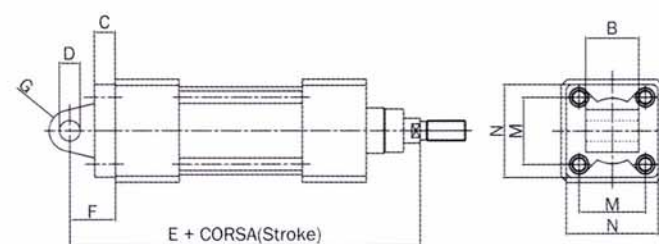
### CERNIERA FEMMINA POSTERIORE - CPI REAR FEMALE HINGE

Ø	B	C	D	E	F	G	H	M	N
32	26	10	10	142	22	10	32	32,5	45
40	28	10	12	160	25	12	37	38	55
50	32	10	12	170	27	12	39	46,5	65
63	40	12	16	190	32	16	48	56,5	75
80	50	14	16	210	36	16	52	72	95
100	60	16	20	230	41	20	61	89	115



### CERNIERA MASCHIO - CMI MALE HINGE

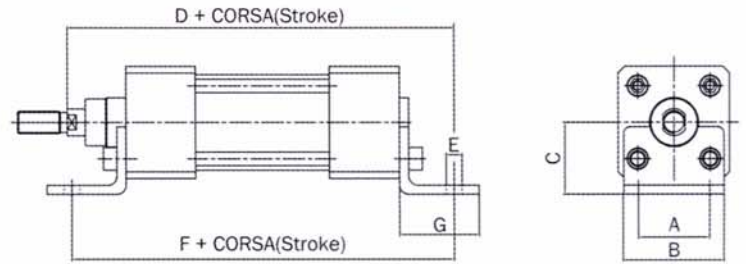
Ø	B	C	D	E	F	G	H	M	N
32	26	10	10	142	22	10	32	32,5	45
40	28	10	12	160	25	12	37	38	55
50	32	10	12	170	27	12	39	46,5	65
63	40	12	16	190	32	16	48	56,5	75
80	50	14	16	210	36	16	52	72	95
100	60	16	20	230	41	20	61	89	115



## COMPONENTI DI FISSAGGIO • FIXING PARTS

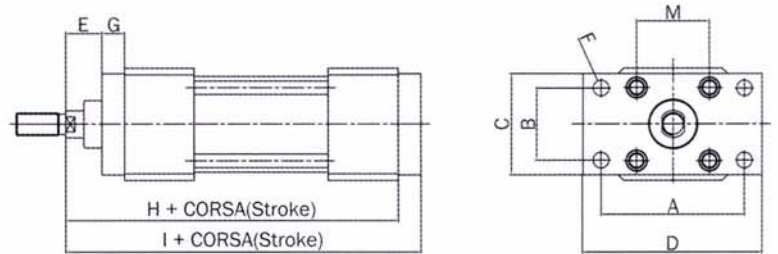
### PIEDINO / FOOT - PI

Ø	A	B	C	D	E	F	G	H
32	32	45	32	144	7	142	35	4
40	36	52	36	163	9	161	36	4
50	45	65	45	175	9	170	47	5
63	50	75	50	190	9	185	45	5
80	63	95	63	215	12	210	55	6
100	75	115	71	230	14	220	57	6



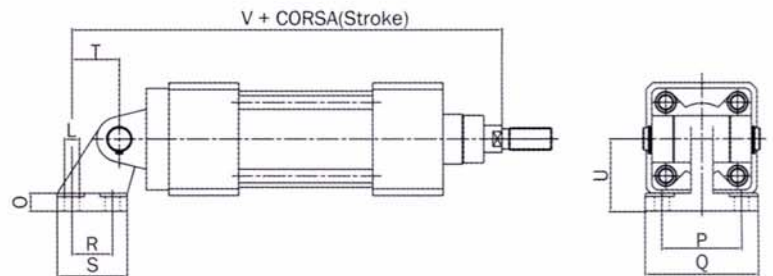
### FLANGIA / FLANGE - FPI - FAI

Ø	A	B	C	D	E	F	G	H	I	M
32	64	32	45	80	16	7	10	120	130	32,5
40	72	36	52	90	20	9	10	135	145	38
50	90	45	65	110	25	9	12	143	155	46,5
63	100	50	75	120	25	9	12	158	170	56,5
80	126	63	95	150	30	12	15	174	190	72
100	150	75	115	170	35	14	15	189	205	89



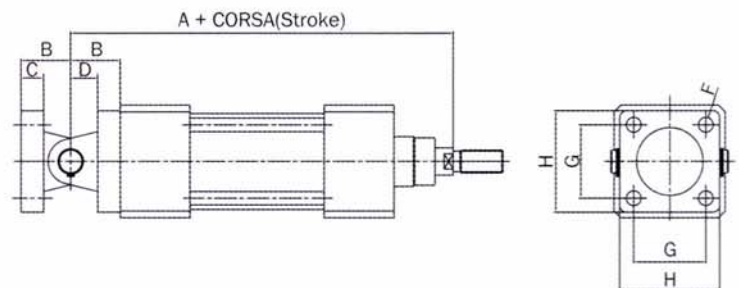
### CERNIERA POSTERIORE A SQUADRO - CPSI SQUARE REAR HINGE

Ø	L	O	P	Q	R	S	T	U	V
32	6,6	8	36	51	18	31	21	32	163
40	6,6	10	41	54	22	35	24	36	184
50	9	12	50	65	30	45	33	45	215
63	9	12	52	67	35	50	37	50	227
80	11	14	66	86	40	60	47	63	257
100	11	15	76	96	50	70	55	71	285



### CERNIERA POSTERIORE COMPLETA - CPCI COMPLETE REAR HINGE

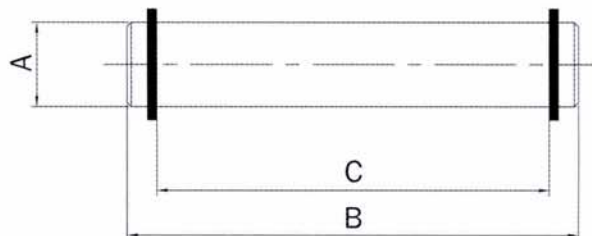
Ø	A	B	C	D	E	F	G	H
32	142	22	10	12	10	6,6	32,5	45
40	160	25	10	15	12	6,6	38	55
50	170	27	10	17	12	9	46,5	65
63	190	32	12	20	16	9	56,5	75
80	210	36	14	22	16	11	72	95
100	230	41	16	25	20	11	89	115



## COMPONENTI DI FISSAGGIO • FIXING PART

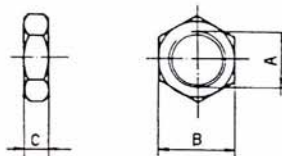
### PERNO PER CERNIERA / PIVOT FOR HINGE - PI

Ø	A	B	C
32	10	53	46
40	12	60	53
50	12	68	61
63	16	78	71
80	16	98	91
100	20	118	111



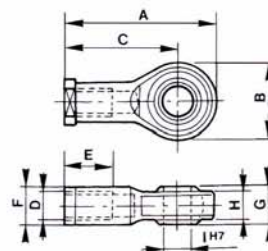
### DADO PER STELO / PISTON ROD'S NUT - DEI

Ø	A	B	C
32	M10x1,25	17	6
40	M12x1,25	19	7
50-63	M16x1,5	24	8
80-100	M20x1,5	30	9



### GIUNTO A SNODO SFERICO - SFI SPHERICAL SWIVEL JOINT

Ø	A	B	C	D	E	F	G	H	H
32	57	28	43	M10x1,25	20	17	14	10,5	10
40	66	32	50	M12x1,25	22	19	16	15	12
50-63	85	42	64	M16x1,5	28	22	21	15	16
80-100	102	50	77	M20x1,5	33	30	25	18	20



### FORCELLA FEMMINA - FFI FEMALE FORK

Ø	D1	G	A	B	D2	D3	L1	L2	L3	F
32	10	20	20	10	M10x1,25	18	52	40	15	25
40	12	24	24	12	M12x1,25	20	62	48	18	30
50-63	16	32	32	16	M16x1,5	26	83	64	24	39
80-100	20	40	40	20	M20x1,5	34	105	80	30	48

